

# DELPHI online tools

**Online contents, validation procedure and ePortfolio platform**

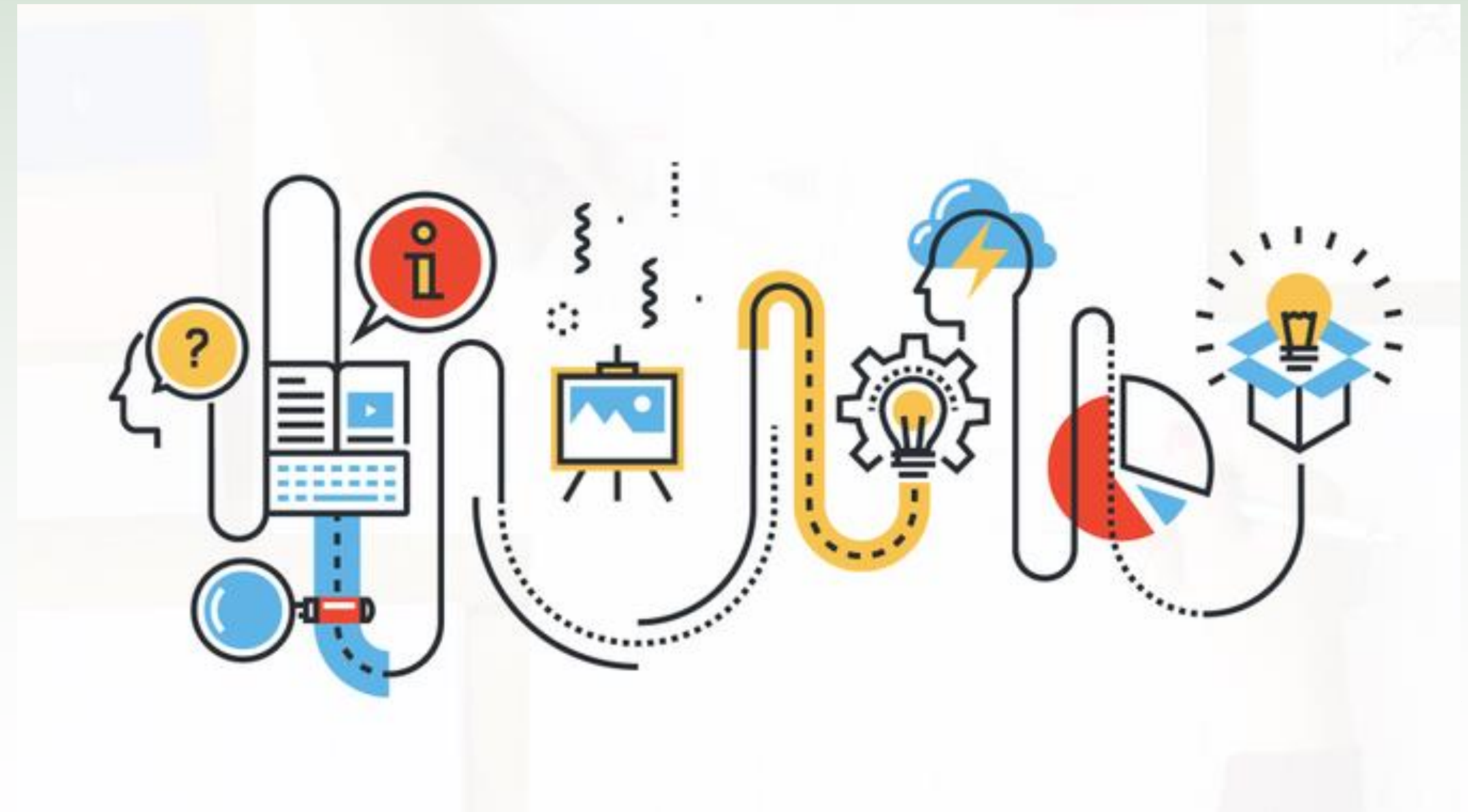
**Julia Busche (blinc eG) - 14 October 2020**

[www.delphi-eu.org](http://www.delphi-eu.org)

# The DELPHI learning platform

*We will look at*

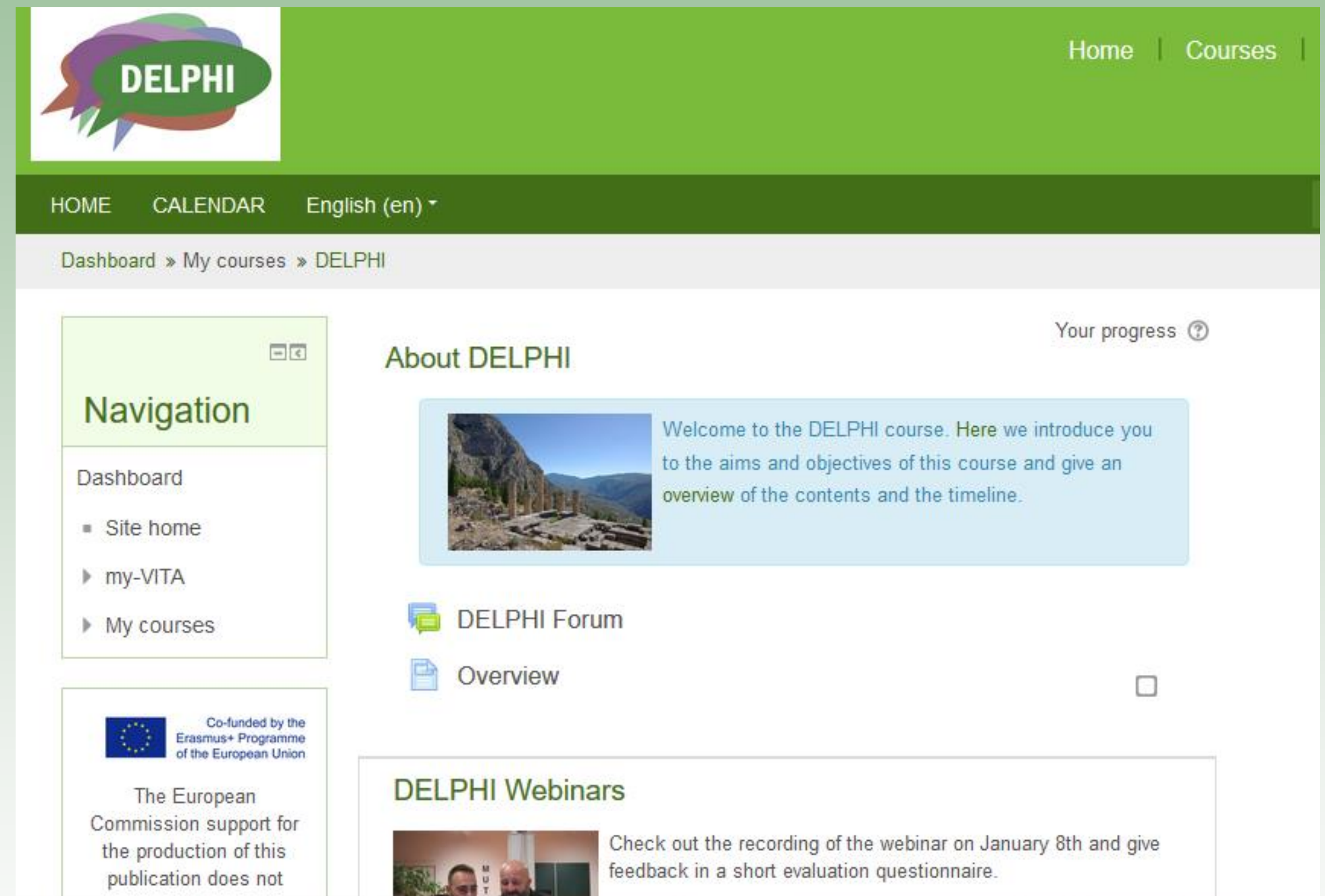
- the online contents of the blended learning course
- the DELPHI competence assessment and validation offer
- the DELPHI ePortfolio platform



# The DELPHI course online

## *How to join*

- Accessible via the DELPHI homepage (Training)
- Register for your account and start after approval
- Find contents on:
  - HI frameworks
  - HI and values
  - HI methods
  - How to connect HI with AE
  - Evidencing competence developments



The screenshot shows the DELPHI course homepage. At the top left is the DELPHI logo, and at the top right are navigation links for 'Home' and 'Courses'. Below this is a dark green header with 'HOME', 'CALENDAR', and 'English (en)'. A breadcrumb trail reads 'Dashboard » My courses » DELPHI'. The main content area is divided into several sections: a 'Navigation' sidebar with links to 'Dashboard', 'Site home', 'my-VITA', and 'My courses'; an 'About DELPHI' section with a welcome message and a 'Your progress' indicator; a 'DELPHI Forum' section with an 'Overview' link; and a 'DELPHI Webinars' section with a video recording and a feedback request. A European Union logo and text about Erasmus+ funding are also visible in the bottom left of the main content area.

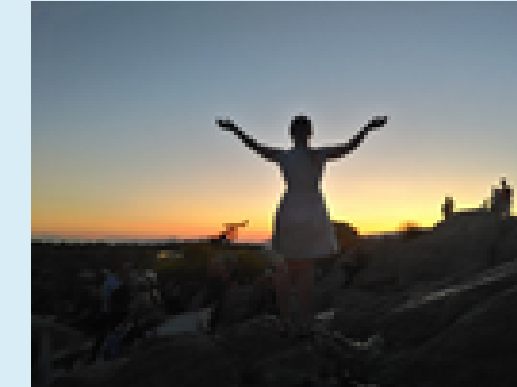


# Assess your competences

*with the DELPHI online self-assessment*

- Start the procedure via the self-assessment link
- Edit your profile and describe your learning project
- Select competences to assess
- Rate and reason your development
- Receive your certificate

## Assess and show your competences



The DELPHI course is grounded on the principles of competence oriented learning, which includes a competence framework specifically developed for our project.

After completing your practice project you may be curious to have a closer look at your learning process during this time. And if you like, we can validate this progress for you by issuing a DELPHI learning certificate. Finally we want to introduce our e-portfolio offer, which you can use to show and share your expertise to the world.

Your progress 



The DELPHI competence framework



The DELPHI course is based on a sound competence framework, in which all relevant competences related to value oriented heritage interpretation methods for adult learners are described.

Here you can learn more about it and understand how it can be used.



Self-assessment



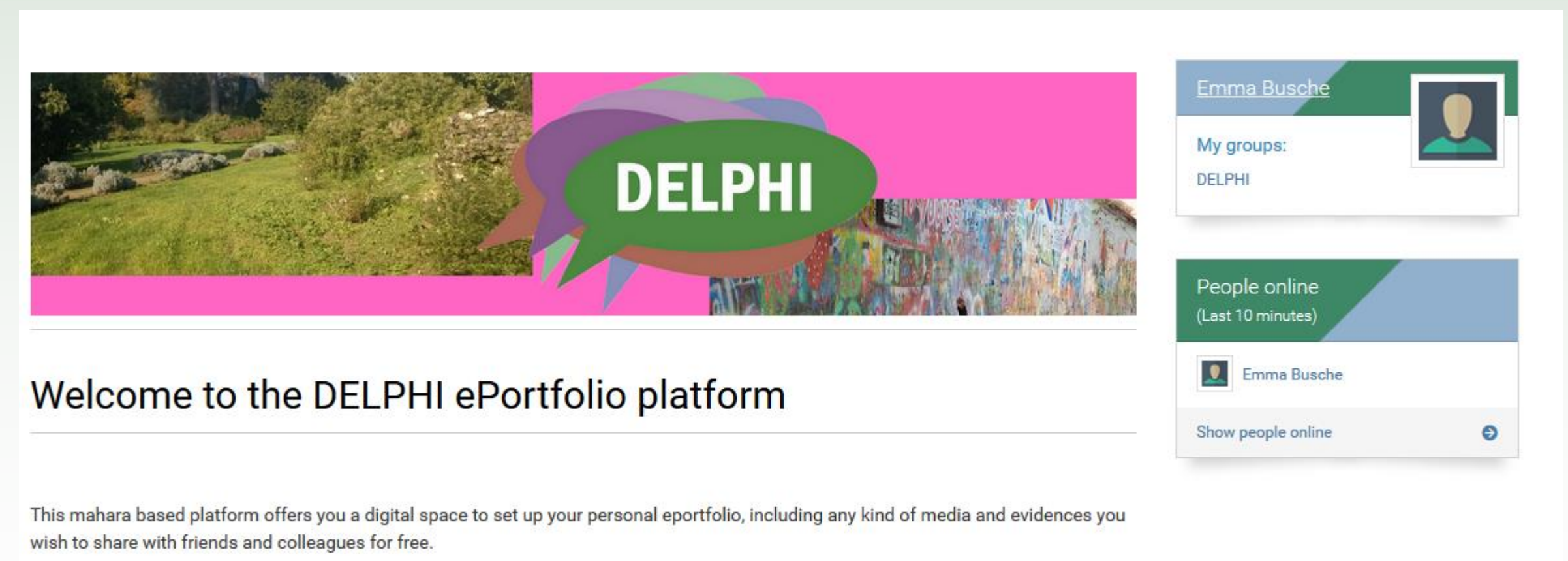
If you would like to validate your learning process and receive a reference for your participation in the DELPHI course, we invite you to take part in the online self-assessment.



# Show your competences

*with an ePortfolio*

- Sign up for your free account at [www.learningsuite.mathetics.eu](http://www.learningsuite.mathetics.eu)
- Create your own profile and multi-media websites to show your expertise
- Store and display evidences of your activities
- Share your pages with others



The screenshot displays the user interface of the DELPHI ePortfolio platform. At the top, there is a banner with a landscape image on the left and a pink background on the right containing the 'DELPHI' logo in a green speech bubble. Below the banner, the text 'Welcome to the DELPHI ePortfolio platform' is centered. At the bottom, a small paragraph states: 'This mahara based platform offers you a digital space to set up your personal eportfolio, including any kind of media and evidences you wish to share with friends and colleagues for free.'

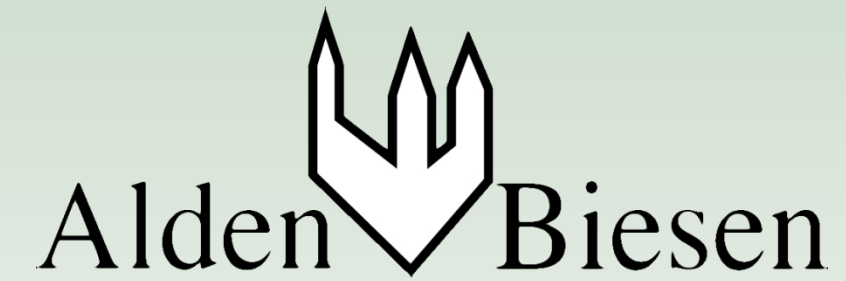
On the right side of the interface, there is a user profile section for 'Emma Busche' with a placeholder profile picture. Below this, it shows 'My groups: DELPHI'. Further down, a 'People online (Last 10 minutes)' section lists 'Emma Busche' with a small profile picture and a 'Show people online' button with a right-pointing arrow.



# Thank you!



German Institute for  
Adult Education  
Leibniz Centre for  
Lifelong Learning



IMAGO MUNDI  
ASSOCIAZIONE CULTURALE ONLUS

